
Regional Ecosystem Maps and Regional Ecosystem Assessments

Case Study

Date:
January 2011



Wide Bay Burnett
Environmental
Consulting Services

Vegetation Management
Specialists

Phone: 07 4159 1523
Mobile: 0438 820 380
Email: info@wbbe.com.au
Web: www.wbbe.com.au
PO Box 8307, Bargara Qld 4670

MCU/RaL | Bushfire Reports
Offsets | PMAVs

Regional Ecosystem Maps and Regional Ecosystem Assessments

Regional Ecosystem Mapping by the Department of Environment and Resource Mapping identifies areas of remnant and non-remnant vegetation on land throughout Queensland. Throughout Queensland native woody vegetation is protected under the *Vegetation Management Act 1999*.

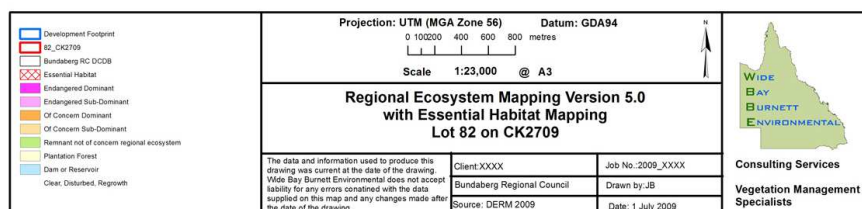
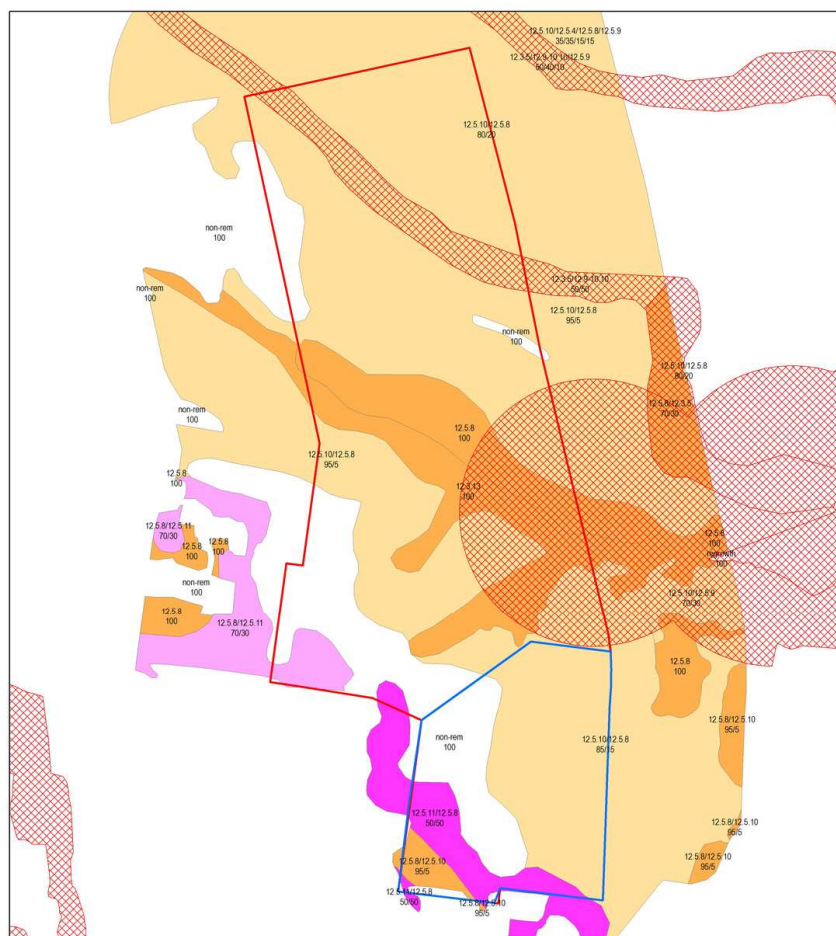
On freehold land, there are two main categories: remnant and non-remnant vegetation. On freehold land, only remnant vegetation is protected by the *Vegetation Management Act 1999*. The restrictions in relation to native woody vegetation on other tenures vary depending on the tenure and are best addressed on a case by case basis.

On freehold land on a regional ecosystem map (RE map) non-remnant vegetation is shown as white and remnant vegetation is shown as one of five colours; Dark pink, light pink, dark orange/brown, light orange/brown or green. The colours relate to the status of the regional ecosystems mapped as present within any given area; Endangered (dark pink), subdominant endangered (light pink), of concern (dark orange/brown), subdominant of concern (light brown), least concern (green).

Restrictions apply when clearing any remnant vegetation and advice needs to be sought prior to any clearing activity occurring. WBBE carries out regional ecosystem assessments to determine the exact location and extent of each regional ecosystem at the property level. This enables us to provide accurate advice to the landholder on a property specific basis. The regional ecosystem assessment allows areas to be identified within which exemptions occur and areas within which clearing should not occur without a permit.

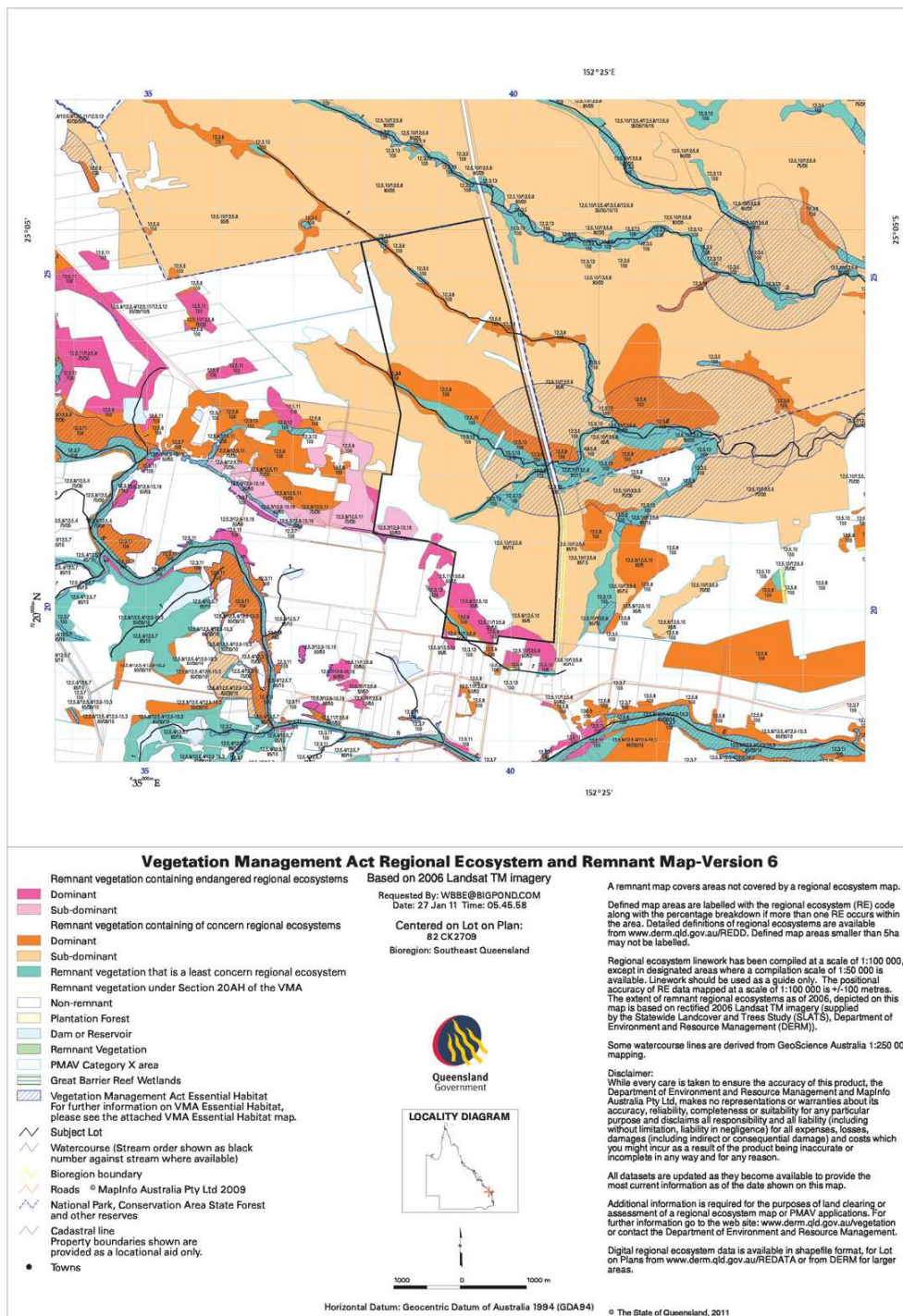
An example of regional ecosystem assessment is shown below. In this instance following the regional ecosystem assessment a Property Map of Assessable Vegetation (PMAV) was lodged to amend the mapping.





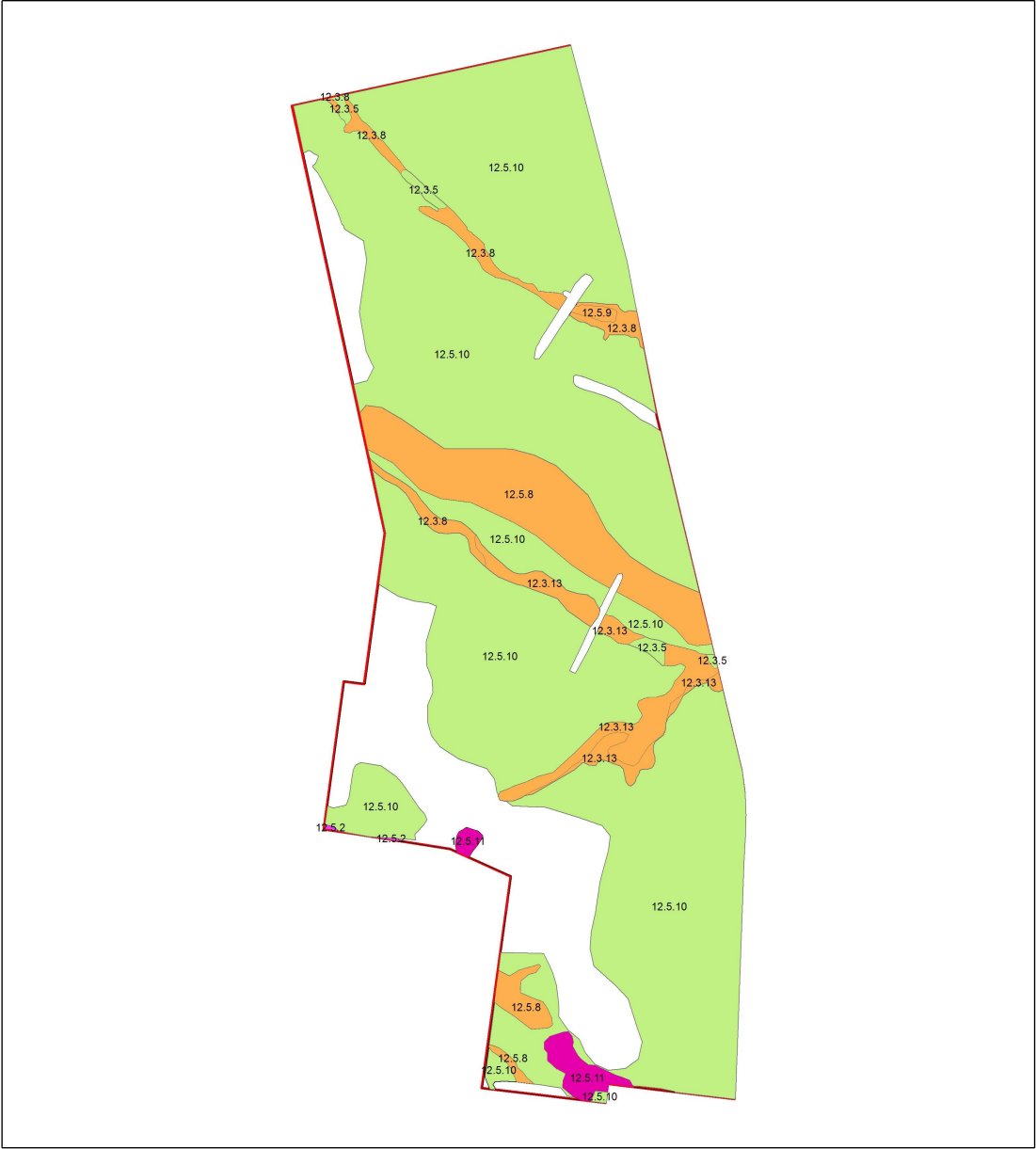
Regional Ecosystem Mapping Version 5.0





Version 6.0 Regional Ecosystem Mapping

Proposed regional ecosystem mapping by WBBE which as since been certified on a PMAV. This figure shows the certified PMAV and WBBE has used GIS to show the location and extent of each regional ecosystem



<div>pmav_2010-001965</div> <div>RE1</div> <div><div></div><div></div><div></div><div></div><div></div><div></div><div></div><div></div><div></div><div></div></div>	Projection: UTM (MGA Zone 56) Datum: GDA94		<div><div>N</div><div></div></div> <div>0 100200 400 600 800 metres</div> <div>Scale 1:23,000 @ A3</div>	<div><div>WIDE</div><div>BAY</div><div>BURNETT</div><div>ENVIRONMENTAL</div></div> <div>Consulting Services</div> <div>Vegetation Management Specialists</div>
	Certified PMAV Lot 82 on CK2709			
	<div>The data and information used to produce this drawing was current at the date of the drawing. Wide Bay Burnett Environmental does not accept liability for any errors contained with the data supplied on this map and any changes made after the date of the drawing.</div>	<div>Client: XXX</div> <div>Bundaberg Regional Council</div> <div>Source: DERM 2008, 2010</div>		