
Vegetation Offset Site Suitability & GIS Analysis

Case Study

Date:
January 2011



Wide Bay Burnett
Environmental
Consulting Services

Vegetation Management
Specialists

Phone: 07 4159 1523
Mobile: 0438 820 380
Email: info@wbbe.com.au
Web: www.wbbe.com.au
PO Box 8307, Bargara Qld 4670

MCU/RaL | Bushfire Reports
Offsets | PMAVs

Vegetation Offset Site Suitability

WBBE has extensive experience in finding and ground truthing suitable vegetation offset sites. WBBE has experience in preparing offset reports, vegetation management plans and voluntary declarations for offsets. These offset proposals have been approved by the Department of Environment and Resource Management.

WBBE also works with Earthtrade Environmental Brokers in the vegetation offset process. Together WBBE and Earthtrade have assisted and continue to assist a diverse client base in securing suitable vegetation offset sites.

WBBE undertakes requirements within the Vegetation Management Plans such as collection of baseline data, collection of data at specified times and photo monitoring.

GIS analysis

WBBE uses the most up to date ESRI Geographical Information Systems (GIS); ArcGIS 10.

This enables very effective and efficient use of resources both in the field and in the office. This technology enables extensive data sources to be analysed and produces results which are incredibly accurate and produces professional maps which clearly show the required information.

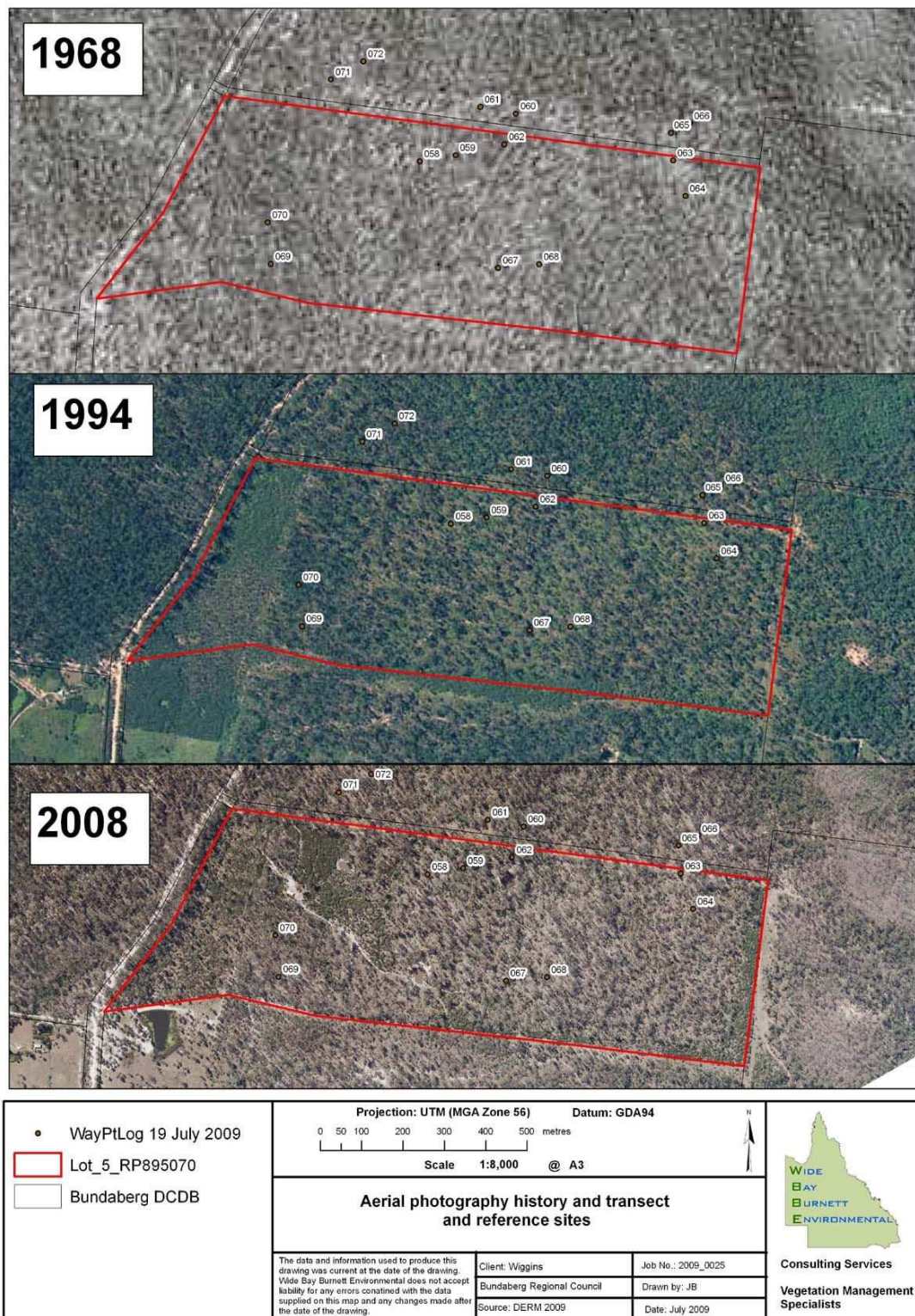
Complex data sets can be analysed and presented in an easy to read professional map. Examples include aerial imagery, satellite imagery, soils mapping, geology mapping, topographical mapping, vegetation mapping, wetland mapping, fish habitat mapping, essential habitat mapping, proposed development plans overlaid on all available and relevant data sets.

WBBE can produce custom made maps for individual clients, however large or small the property or properties, or however complicated the work may be. Please contact us with your requests.

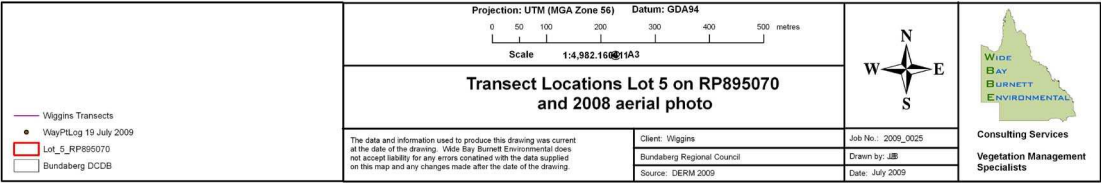


Examples of maps produced by WBBE using GIS.

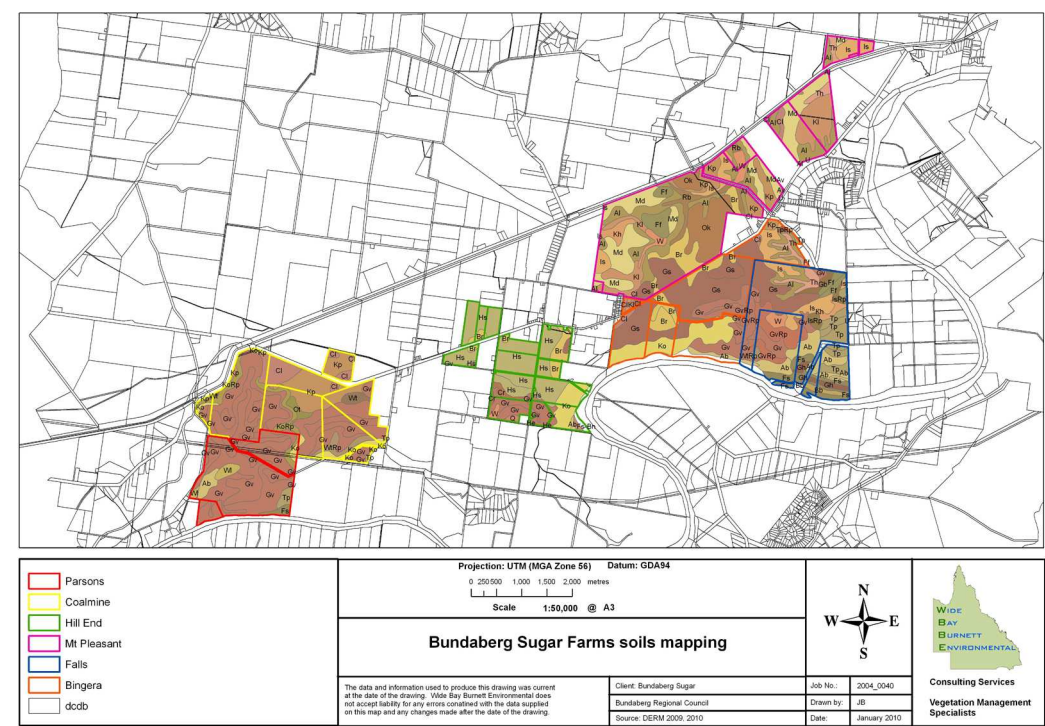
Comparison of aerial imagery over the years



Identify locations of data collection such as transects

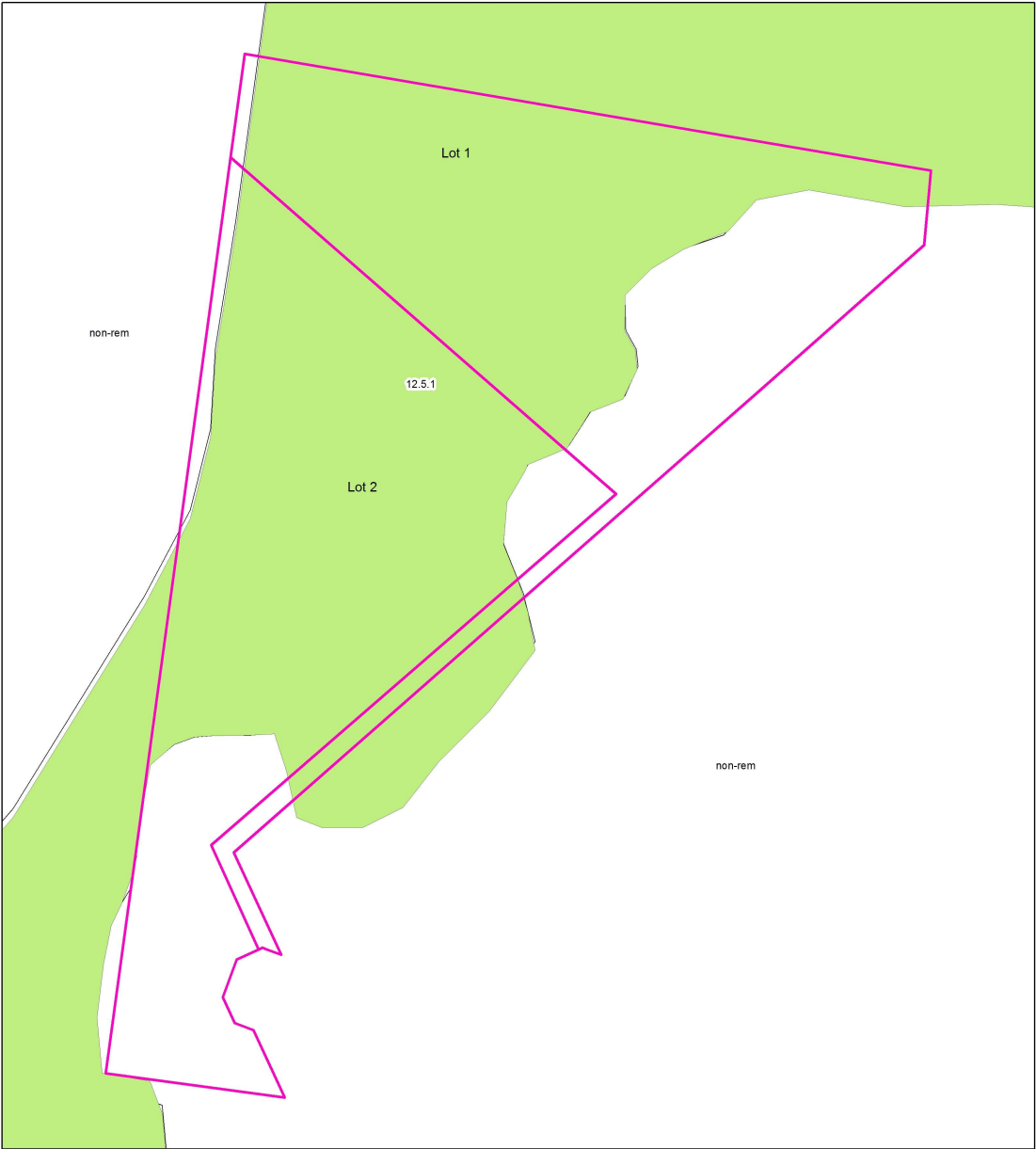


Soils Mapping



Proposed Regional Ecosystem Mapping in Relation to Proposed Subdivision





Proposed Reconfiguration

Dalton_proposed_RE_mapping

LC

non-rem

Projection: UTM (MGA Zone 56) Datum: GDA94

0 25 50 100 metres

Scale 1:1,340 @ A3

Proposed Regional Ecosystem Mapping
in Relation to Proposed Reconfiguration

The data and information used to produce this drawing was current at the date of the drawing.
Wide Bay Burnett Environmental does not accept liability for any errors contained with the data supplied on this map and any changes made after the date of the drawing.

Client: A Client
South Burnett RC
Source: WBBE 2010

Job No.:2010_0XXX
Drawn by:JB
Date: March 2010

WIDE
BAY
BURNETT
ENVIRONMENTAL

Consulting Services
Vegetation Management
Specialists

A decorative graphic at the bottom of the page featuring a green and yellow pattern that resembles a close-up of a leaf or a natural texture.